

**General**

Our products are designed to comply with the recommended codes of practice for lighting and to be installed and serviced by competent persons in accordance with the relevant wiring regulations.

Please Note: Product requires a 240vAC supply and is a Class 1 appliance.

**Contents**

- Security PIR Camera with Light
- Screw Accessories Package
- Manual
- Reset Pin
- Junction Box
- Dust Pad

**Installation**

Warning: before any installation or maintenance, ensure that the electrical supply is switched off at the breaker.

**Preparation For Use**

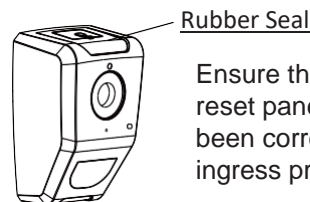
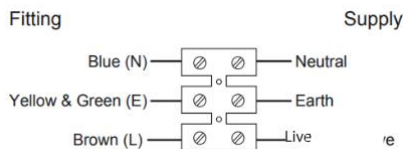
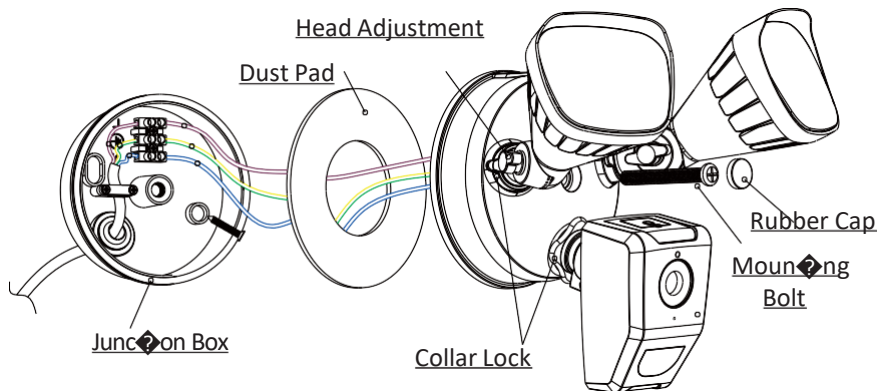
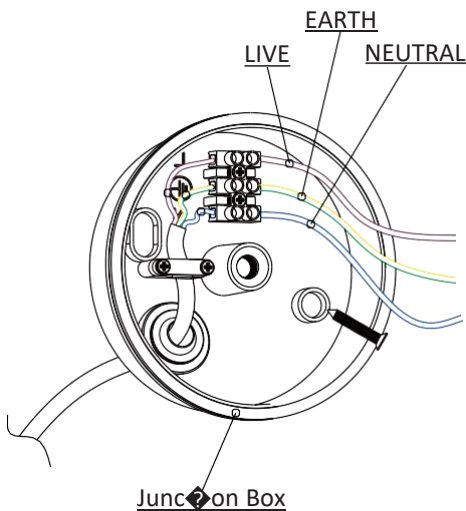
Ensure that the smart phone is connected to the same Wi-Fi network that you would like to attach the device.

Ensure that you have a mobile device running iOS 8 or higher or Android 4.1x or higher and a 2.4GHz Wi-Fi connection.



Download the ClickSmart+ App on your mobile device from the App Store or Google Play.

Sign in or Register following the instructions on the ClickSmart+ App.



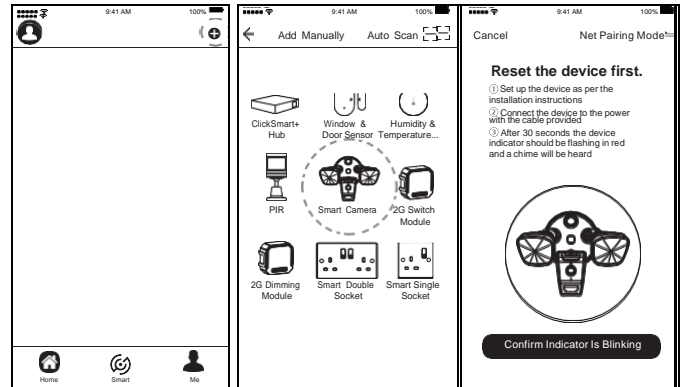
Ensure the rubber seal covering the reset panel and SD storage slot has been correctly fitted. This is to ensure ingress protection



## Pairing with the app

1. Power up the device VIA the mains
2. After 10 seconds the lamps will illuminate, and then after a further 25 seconds the lamps will turn off and the unit will double bleep every 10 seconds, the unit is now ready to be configured.
3. On the ClickSmart+ App's home page, tap the "+" symbol in the top right corner of the home screen. Then tap "Smart Camera", and then follow the on screen instructions.

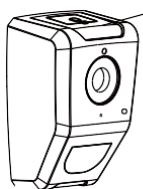
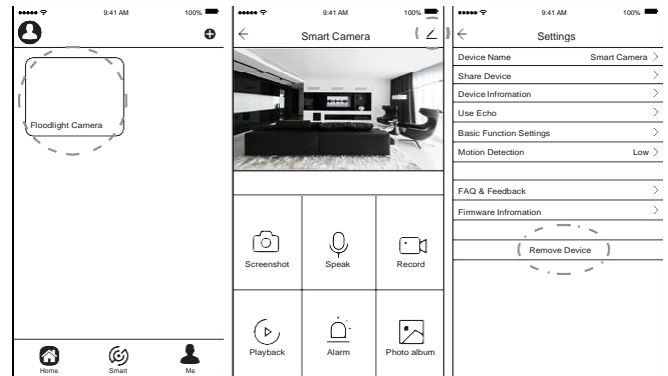
The ClickSmart+ app will guide you through:  
 Entering the Wi-Fi Network and Password.  
 Using the Camera to scan a QR code.  
 Connecting the Device.



## Resetting the Device

If the camera needs to be reset, connected to a new Wi-Fi network, or if it needs to be paired with a new master account, remove the device from the app, prior to resetting the device.

1. Hold the reset button for 10 seconds, and the unit will bleep and then proceed to reset.
2. After 10 seconds, the lamps will illuminate for up to 20 seconds.
3. After a further 5 seconds, the unit will bleep 4 times indicating it has successfully rebooted.
4. Then finally the unit will bleep twice every 10 seconds, and the device is now ready to be configured.



**Reset Button**

The Reset Button is behind the rubber seal

## Troubleshooting Guidance

- >Unit requires a minimum of 2 Mbps (upload/download)
- >This unit only operates on 2.4GHz
- >If the signal strength of your Wi-Fi router is weak: Change router/camera relative position to receive better signal, Use Wi-Fi repeater/extender to maximize the range of your Wi-Fi router.
- >If the device is installed on a new network the unit will require resetting
- >If the camera needs to be added to a new account, unbind the device from the first account prior to resetting the device.

For more product information please visit the ESP website

The LEDs fitted in this product are non-replaceable. The unit should be recycled in the correct manner when it reaches the end of its life.

**WARNING : LED LAMPS ARE EXTREMELY BRIGHT. UNDER NO CIRCUMSTANCES SHOULD YOU LOOK DIRECTLY INTO AN LED BEAM. CAN CAUSE IRREPARABLE DAMAGE TO THE EYE**